



Aspire Collection

Explore our collection of timeless home designs as inspiration for the look and feel of your own future Harlan Home.

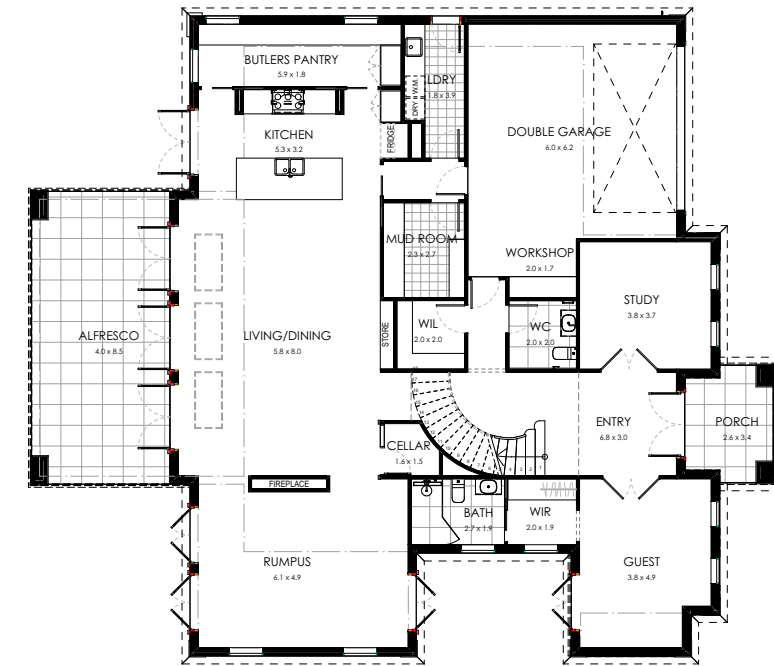
These exclusive Harlan Homes designs serve as a customisable foundation for your specific needs and block size, offering a perfect starting point for creating your dream home while initiating a collaborative journey with our team.

Bordeaux

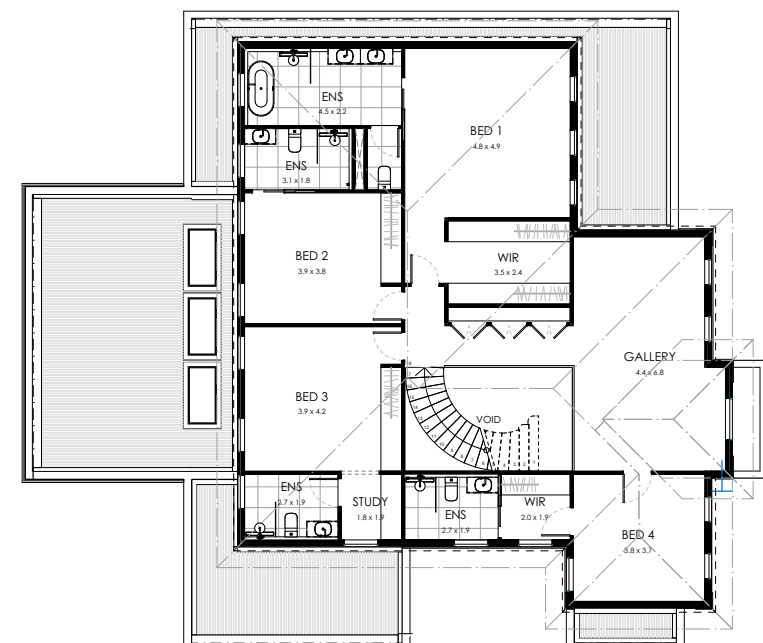
Thoughtfully considered design with elegant and timeless details.

Porch	7.64m ²
Alfresco	33.86m ²
Garage	45m ²
First Floor	173.72m ²
Ground Floor	219.71m ²
Total	479.93 m²

Ground Floor



First Floor

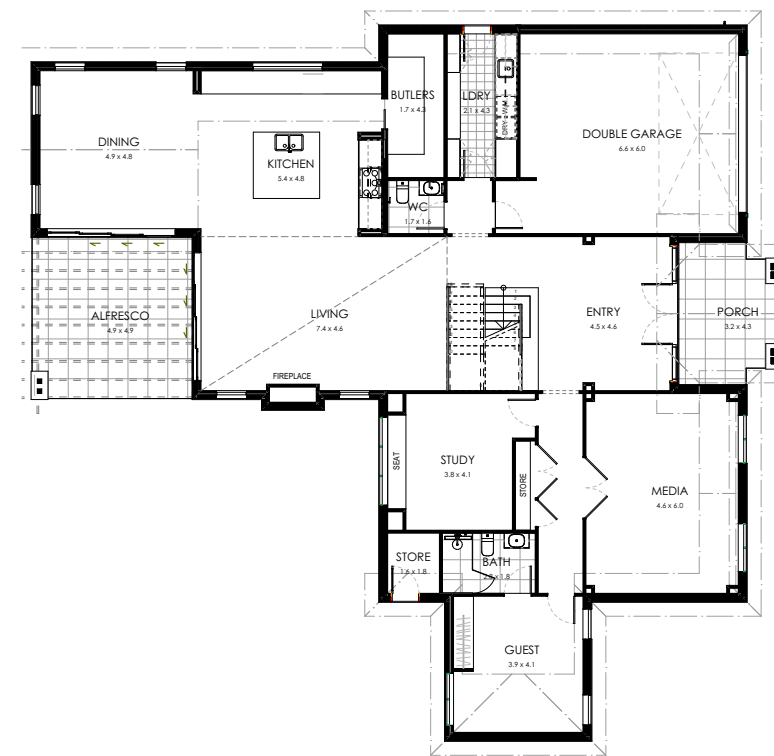


Marina

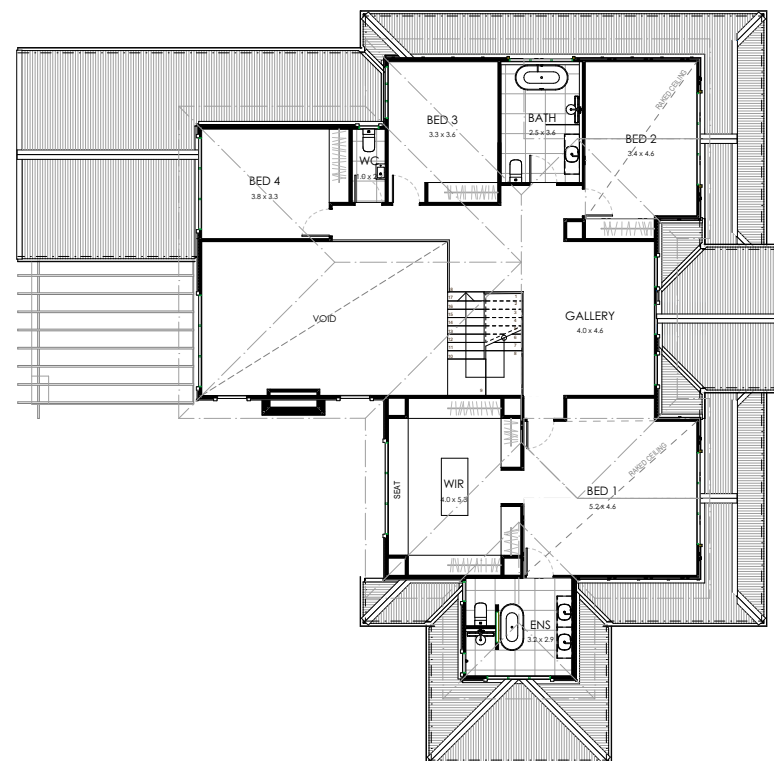
Traditional architecture
meets refined coastal style.

Porch	12.46m ²
Alfresco	23.68m ²
Garage	44.39m ²
First Floor	198.13m ²
Ground Floor	238.91m ²
Total	517.57m²

Ground Floor



First Floor

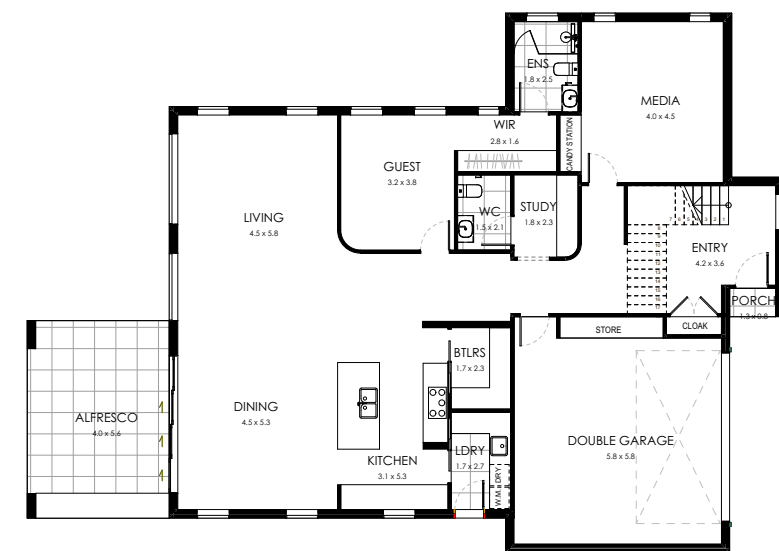


Barossa

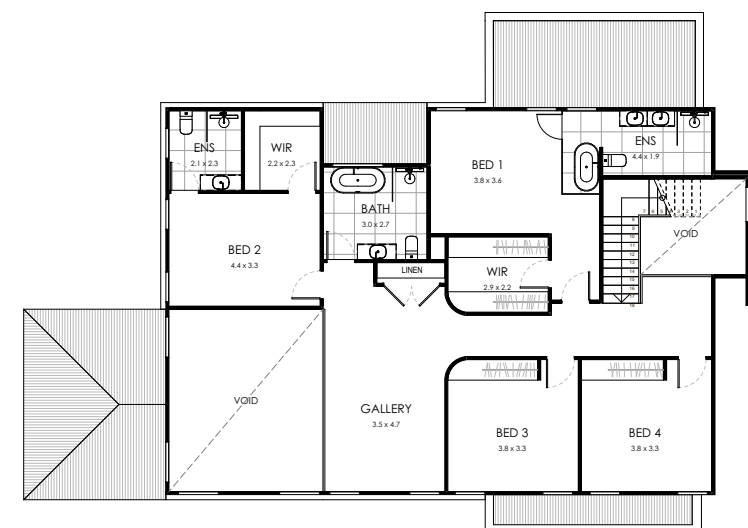
A stylish and luxurious contemporary home.

Porch	1.04m ²
Alfresco	22.24m ²
Garage	37.62m ²
First Floor	171.29m ²
Ground Floor	179.40m ²
Total	411.59m²

Ground Floor



First Floor



Structural Inclusions

External —

- Rendered façade, side and rear elevations, combined with premium PGH bricks, architectural moulding, feature cladding, stone and balcony

Frame —

- High ceiling from 2740mm
- 75mm hebel power floor in between ground floor and first floor
- Recess floors to all wet areas

Windows —

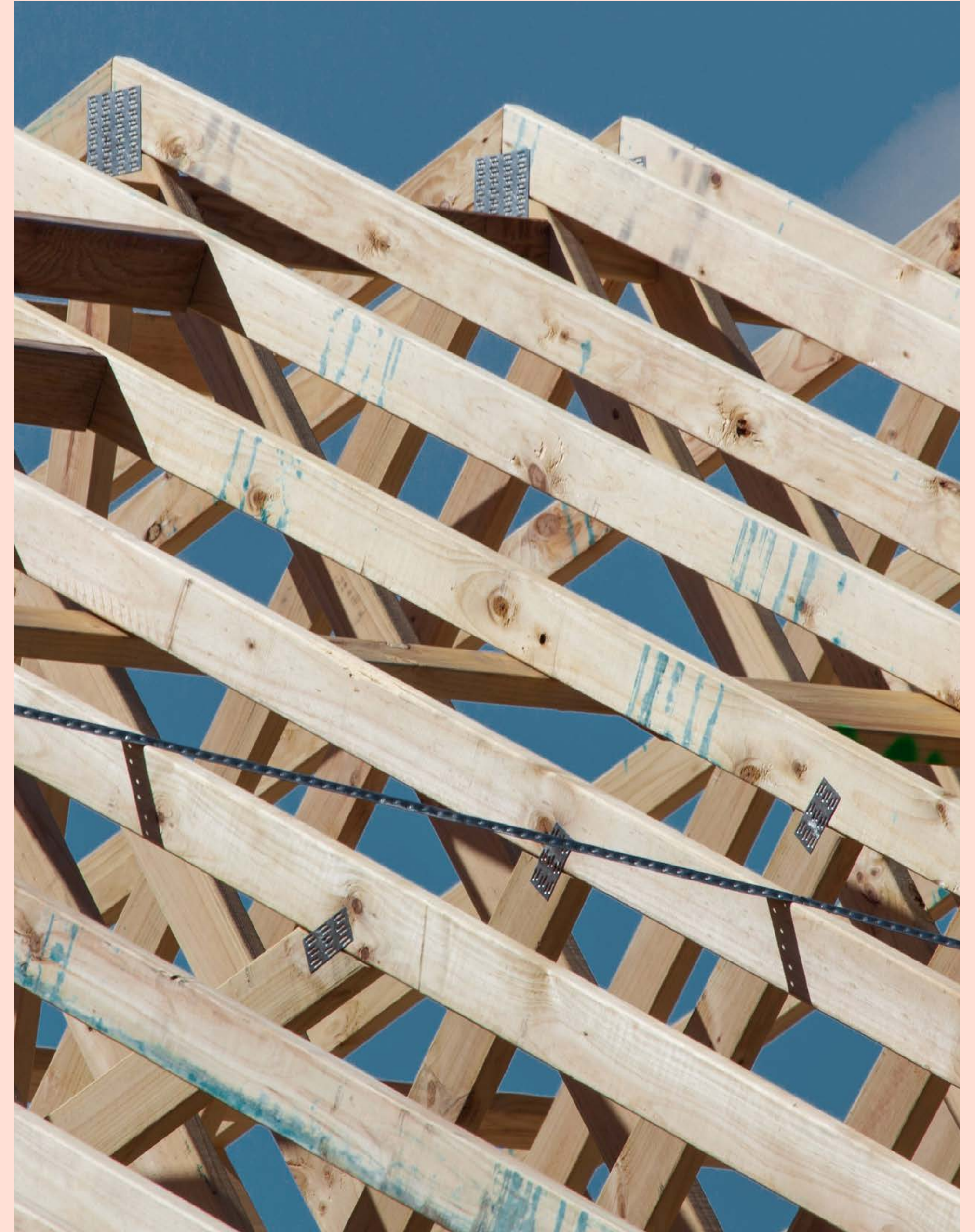
- Full commercial external stacker or bi-fold doors, semi-commercial external windows (double glazing) exceeding basix/thermal comfort requirement. Alfresco door sill is fully flashed with stainless steel underside

Hot water system —

- 2x Rinnai B26 gas continuous flow hot water systems

Air Conditioning —

- Actron reverse cycle ducted air conditioning unit, ducts and control system. 6 Zone System (2 control panels, plus mobile app controller)



Finishes

Kitchen —

- Polytec Thermolaminated or polyurethane finish profile or flat cabinetry
- 40mm Caesarstone benchtop from Deluxe range or 20mm Caesarstone benchtop
- Wine rack feature within cabinetry
- Butler's pantry includes cabinetry with sink, tap and Caesarstone benchtop
- Stone splashback to kitchen

Appliances —

- Miele kitchen appliance package consisting of – choice of Miele built-in ovens
- Choice of gas or induction cooktop
- Choice of rangehood
- Miele built-under bench dishwasher and freestanding microwave

Flooring —

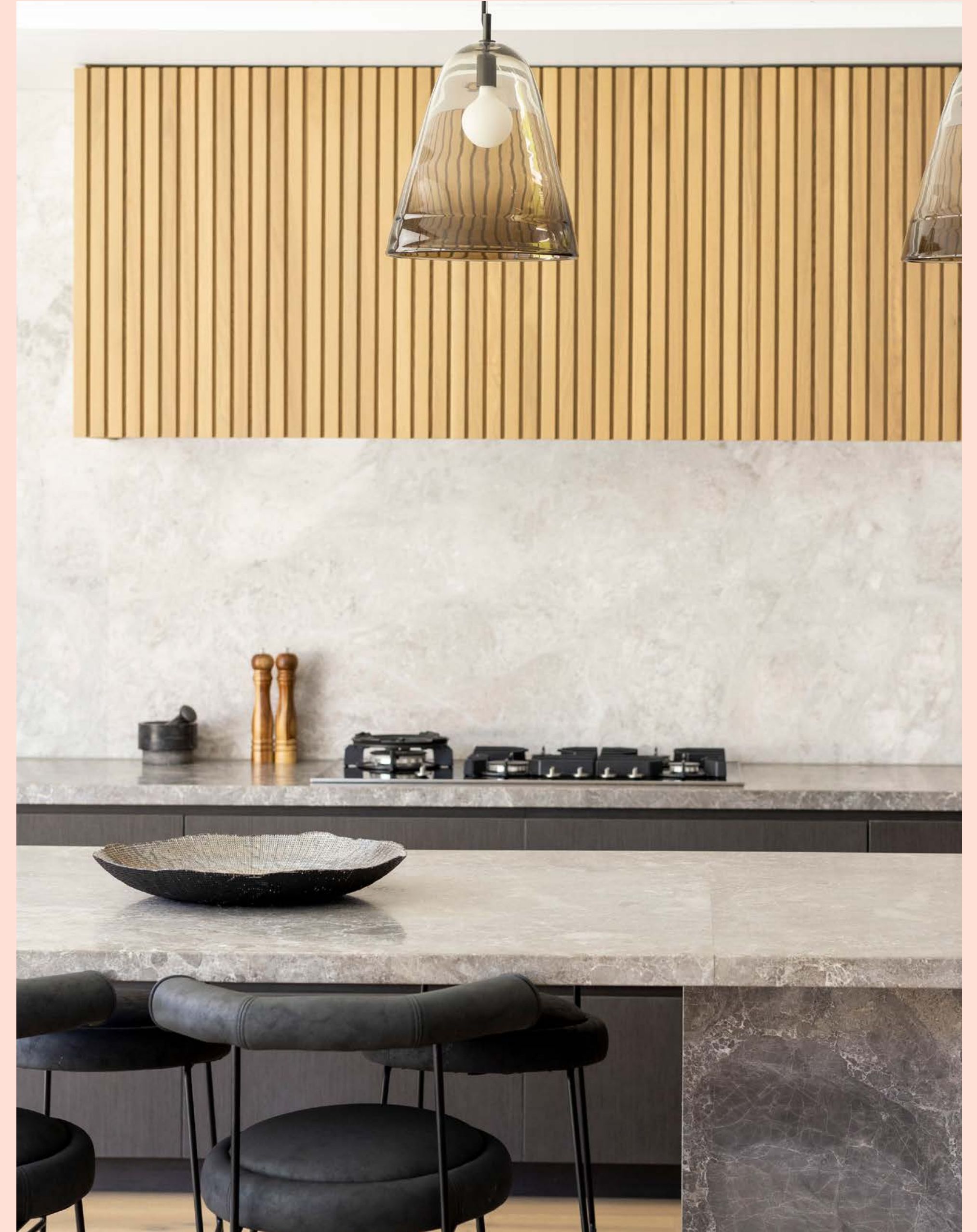
- Engineered Timber flooring including herringbone pattern or terrazzo floor to all ground floor areas with exception to wet areas
- Porcelain tiles to all wet areas
- Carpet and gold premium underlay - provided to lounge or theatre rooms and all bedrooms
- Tiling to porch, alfresco and balcony

Bathroom —

- Full height tiling in bathroom, ensuite and powder room
- 10mm frameless glass shower screens
- Linear tile insert drain to all showers
- Mirrored shaving cabinets to main bathrooms
- Half height wall shower ledges to all showers
- Vanities in Polytec Thermolaminated range

Staircase —

- Staircase includes timber treads, painted risers, wrought iron or glass balustrade or feature newel post and top. Victorian ash handrail stained to suit



Fixtures/Fittings

Entrance Doors —

- 1200mm wide or 2x 920mm wide hinged entry doors

Internal doors —

- Hume Accent range - 2340mm high

Fix out —

- Square set or profile cornice
- Colonial or Victorian skirting boards with architraves to match
- Wainscoting applied to entry/hall, staircase and first floor hall depending on house style

Tapware & Accessories —

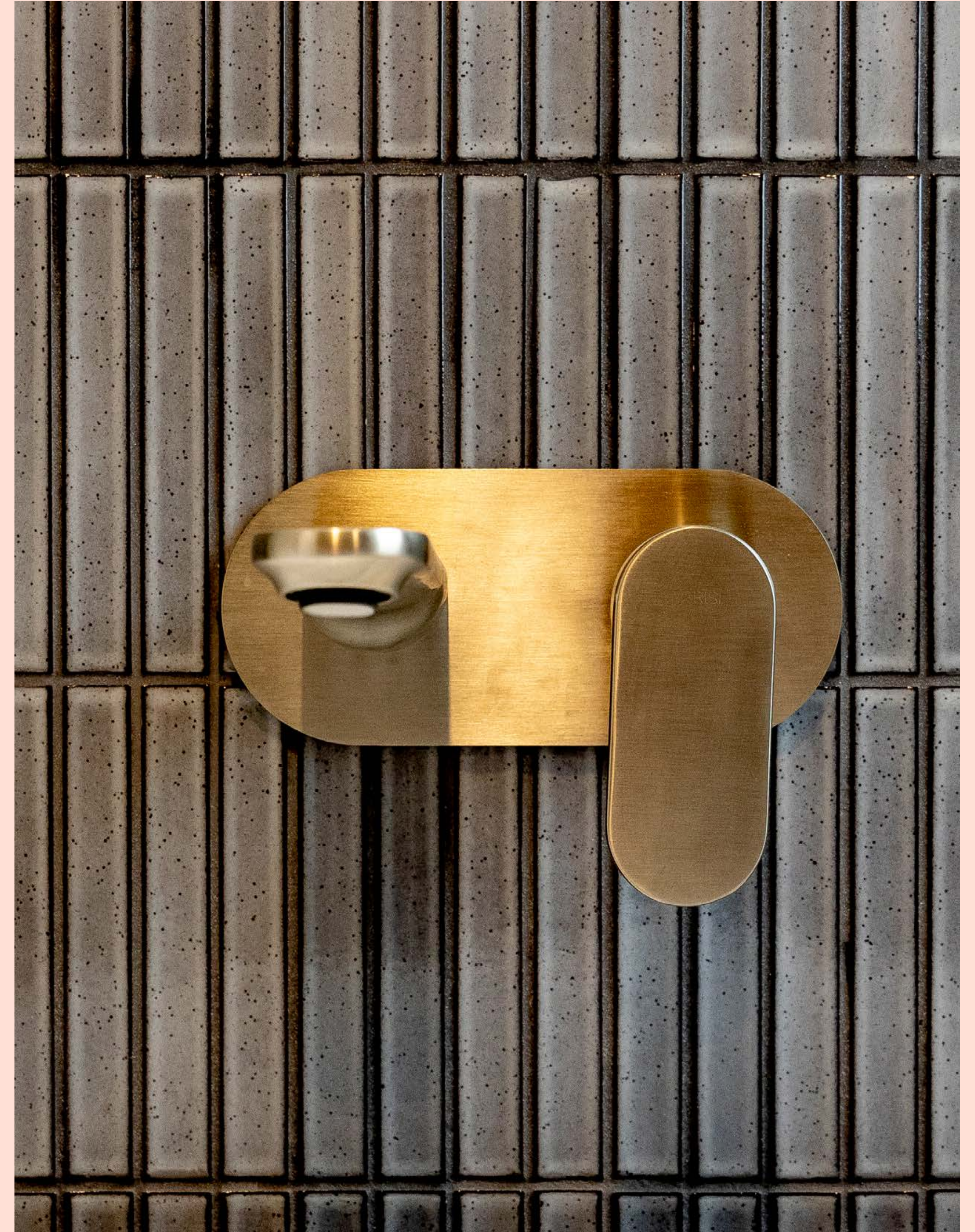
- Gainsborough or Zanda door hardware
- Paris bathroom, kitchen, laundry accessories
- Harlan offers flexibility to work with an interior designer to suit our client's design preferences

Robes —

- Sliding mirrored doors or selected internal doors
- 1x long hanging robe space
- 1x double hanging robe space
- 1x set of drawers (4x drawers) at 460mm wide with 2x adjustable shelves above

Electrical —

- 70x recessed LED downlights
- 50x Clipsal Iconic range double power points



Simply beautiful homes

Crafted to be enjoyed
for generations to come.

Phone – 02 8912 9290
harlanhomes.com.au
@harlan_homes

Level 5, 54 Miller Street,
North Sydney, NSW 2060
info@harlanhomes.com.au

HARLAN
Homes